

Model X17J PLUS

COMPACT CRAWLERS

english



MORE ECONOMIC

- Minimal emissions and noise pollution.

MORE PRODUCTIVE

- Reduce your set-up time with auto-levelling outriggers.
- Unrestricted 230kgs basket capacity.

MORE ACCESS

- Equipped with track drive for easy manoeuvrability in sensitive environments.

SMART DESIGN

- Low weight for ease of transportation and operation in weight restricted areas.



Standard Features

- 0.69 m x 1.34 m Aluminium 2 person platform
- Slide bar rear entry
- Footswitch
- Full proportional control
- Articulating jib
- Powered platform rotator (124°)
- Remote Control (via cable to platform)
- Full Remote Control of drive and stabilization
- Multi-lingual LCD display on platform console
- Platform console position sensor and lock
- Envelope management load sensing system
- Platform designed for ease of removal/changeover
- AC Cable to platform
- 6,5mm air line to platform
- Engine protection
- Rubber Outrigger Pads
- Cylinder Rod Protection on Outriggers
- Automatic cut-out when out of level
- Powered track extensions/retraction
- 360° non-continuous turntable rotation
- Turntable alignment sensor and gauge
- Three emergency descent systems
- Electro-hydraulic controls
- Full pressure hydraulic controls
- Lifting/Tie down points
- 2nd (high) Drive speed
- Forklift pockets

Standard Specifications

- | | |
|-------------------------------|--|
| Power Source | |
| • AC electric motor | 2.2 KW 50Hz 230V |
| • HONDA iGX 390 | 8.7 Kw Petrol |
| • Hydraulic oil tank capacity | 40 L |
| Tracks | |
| • Standard | 1.24 m x 0.18 m x 0.30 m
Low Profile Non Mark Rubber Tracks |

Accessories & Options

- 110V, 50Hz single phase power system
- 100Ah/ 48V Electric engine with Lithium battery package incl. battery charger ¹
- Hatz 1B40 - 7.5kW (10 HP) diesel engine
- 1.24 m x 0.18 m x 0.30 m Low Profile Black Rubber Tracks
- 0.60 m x 0.78 m Aluminium single person platform
- Special paint colour

printed by: www.arag-bau.ch




¹ Replaces both combustion and electric engines

Model X17J PLUS

COMPACT CRAWLERS

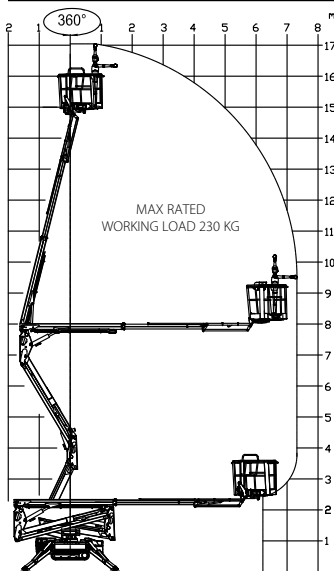
Performance

- Working Height 16.96 m
- Horizontal Working Outreach (Std Platform) 7.50 m
- Platform capacity  /230 kg
- Up & Over Height 7.75 m
- Swing (non continuous) 360°
- Jib - overall length 1.68 m
- Jib - range of articulation (+/-) 89° (+0/-89°)
- Platform size (standard 2 persons) 0.69 m x 1.34 m
- Platform size (narrow one person) 0.60 m x 0.78 m
- Stowed width (with std. 2P platform) 1.34 m
- Dimensions:
 - A. Stowed width (without platform) 0.80 m
 - B. Stowed height (on tracks) 2.00 m
 - C¹. Stowed length (on tracks) with Basket 4.53 m
 - C². Stowed length (on tracks) without Basket 3.90 m
 - D. Outrigger footprint 2.89 x 2.89 m
- Machine weight (with standard platform) 2,190 kg¹
- Gradeability 28.7%
- Maximum operating slope 12°
- Max. Approach / Depart angles Front 20° / Rear 26°
- Width of Undercarriage (Retracted/Extended) 0.79 m / 1.09 m
- Max. ground bearing pressure (on outriggers) 2.50 kg/cm²
- Max. drive speed (single speed m/c) Petrol 1.8 km/h
- Basket rotation 124° (+/-62°)

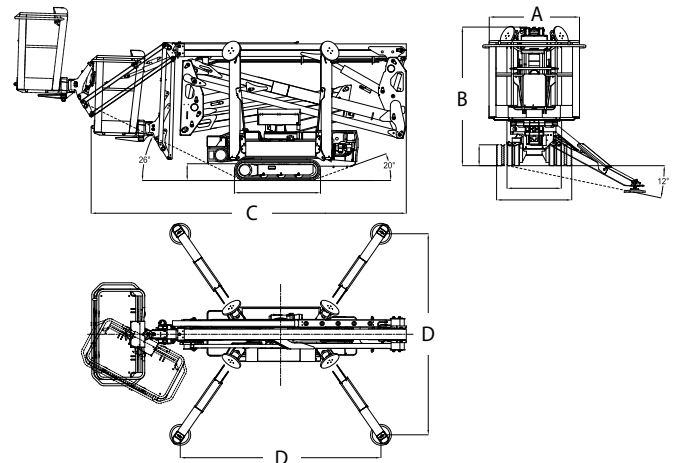
¹ Certain options or country standards may increase weight and/or dimensions.



Reach Diagram



Dimensions



ARAG

Baumaschinen-Rent

ARAG Bau AG

Zinggen

6166 Hasle LU

www.arag-bau.ch

Tel. 058 710 00 00