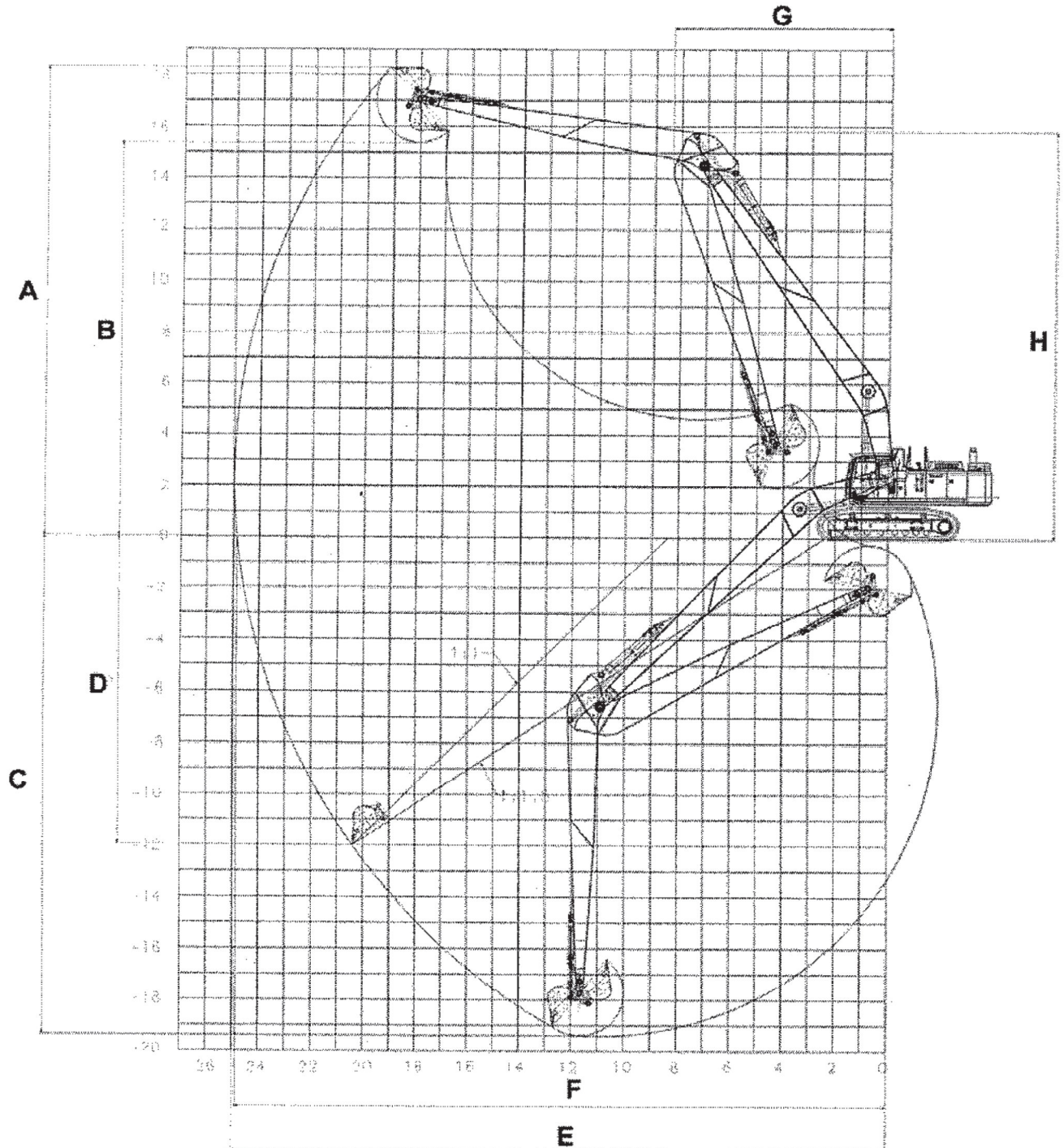


## Datenblatt Long Reach zu PC600



A	MAX DIGGING HEIGHT	18290 mm
B	MAX DUMPING HEIGHT	15390 mm
C	MAX DIGGING DEPTH	19400 mm
D	MAX VERTICAL WALL DIGGING DEPTH	12000 mm
E	MAX DIGGING REACH	25000 mm
F	MAX DIGGING REACH (GROUND LEVEL)	24870 mm
G	MINIMUM SWING RADIUS	8300 mm
H	MAX HEIGHT FOR MINIMUM SWING	15790 mm