



Introduction

With a 360 degree basket capacity of 400kg available throughout the operating envelope, the SkyRailer 400RR provides a safe and stable elevated work platform for multiple people.

SkyRailer 400RR offers an incredible working envelope of 8.5m outreach and 16.4m working height, all whilst operating on a 200mm cant.

As the only Manitou hi-rail EWP to have factory approval for every modification, SkyRailer 400RR is fully compliant with all Australian Standards and Legal requirements.

Nationwide Design Registration and a comprehensive rail registration package developed by Aries Rail allows for easy rail certification and registration on any Australian Rail network.

On-Rail Performance

With two driven and braked rail axles, SkyRailer 400RR has four-wheel-drive and a maximum on-rail speed on 16km/h.

The dedicated rail wheel service brake system features a skid and slip reduction system designed to bring the machine safely to a stop at all times. Once stopped the fail-safe rail wheel park brakes are applied and will easily hold the machine on any rail grade in Australia.

Off-Rail Performance

With four wheel drive, four wheel steering and three steering modes, the off-rail performance of the Manitou 160ATJ+ is in no way compromised by the installation of the Manitou factory approved road-rail equipment.

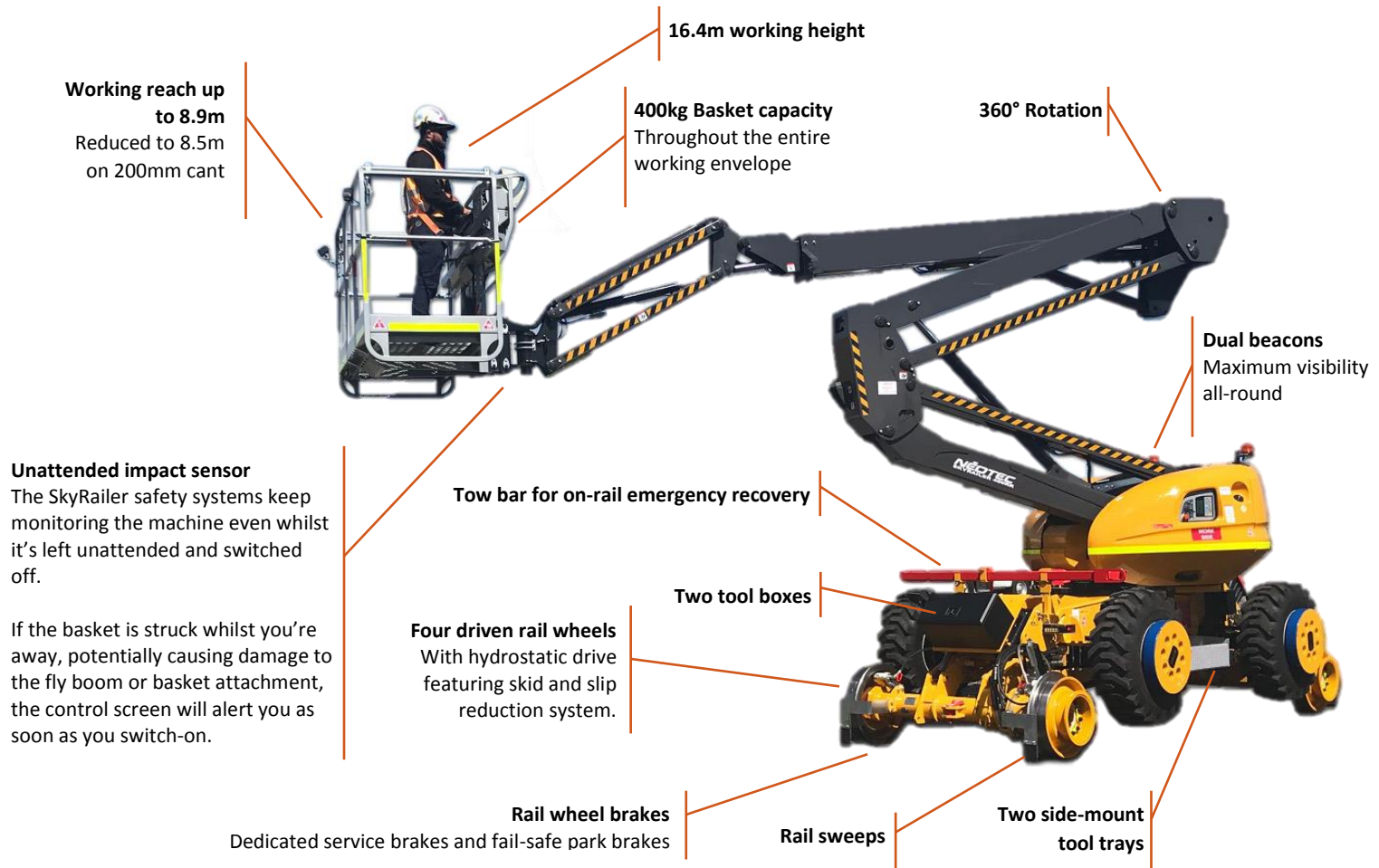
Able to negotiate almost any ground conditions, SkyRailer can travel from the transport vehicle to on-tracking location with ease.











Efficiency

With 360 degree rotation and able to reach the 16.4m maximum working height in under 40 seconds, SkyRailer 400RR allows the operator perform up to four operations simultaneously and reach anywhere in the working envelope quickly and efficiently.

Once work is complete, the unique electronic return-home function allows the operator to safely rotate the turret back to the home position from anywhere in the 360 degree slew envelope.





	On Road	On Rail
	Working height	16.25 m
	Platform height	14.25 m
	Articulation height	7.00 m
	Outreach	8.95 m
		8.9 m (Level track) 8.5 m (200mm cant)
	Fly boom angle	+70° / -70°
	Basket rotation	+90 / -90°
	Turret rotation	360°
	Basket capacity	400 kg
	Basket size	2.30 x 0.93 m
	Width	2.5 m
	Length	7.7 m
	Height	2.37 m
		2.6 m
	Wheelbase	2.2 m
		3.9 m
	Travel speed	6 km/h
	Working speed	0.8 km/h
	Maximum gradient	1:18
	Maximum tilt	5°
	Wheels	18" foam filled rubber
	Driven wheels	4
	Braked wheels	4
	Weight	From 12,500 kg
Engine	Kubota V2403-M 45HP	

Safety and Compliance

SkyRailer features a number of unique and innovative safety features that cannot be found on any other comparable machine.

The hydrostatically driven rail wheels feature a skid and slip reduction system that is integrated with the Manitou engine control and drive computer – Something that is only possible as a result of working directly with the Manitou factory. The system ensures the machine is always able to brake and accelerate as safely as possible.

Unlike some comparable machines, SkyRailer's rail wheel brake systems operate on all four rail wheels and use dedicated systems for service and park brake functions - Park brakes are not used in any service brake capacity.

A switchable bonding system allows the machine to operate under live overhead wires with a safe path to earth provided through the rail wheels.

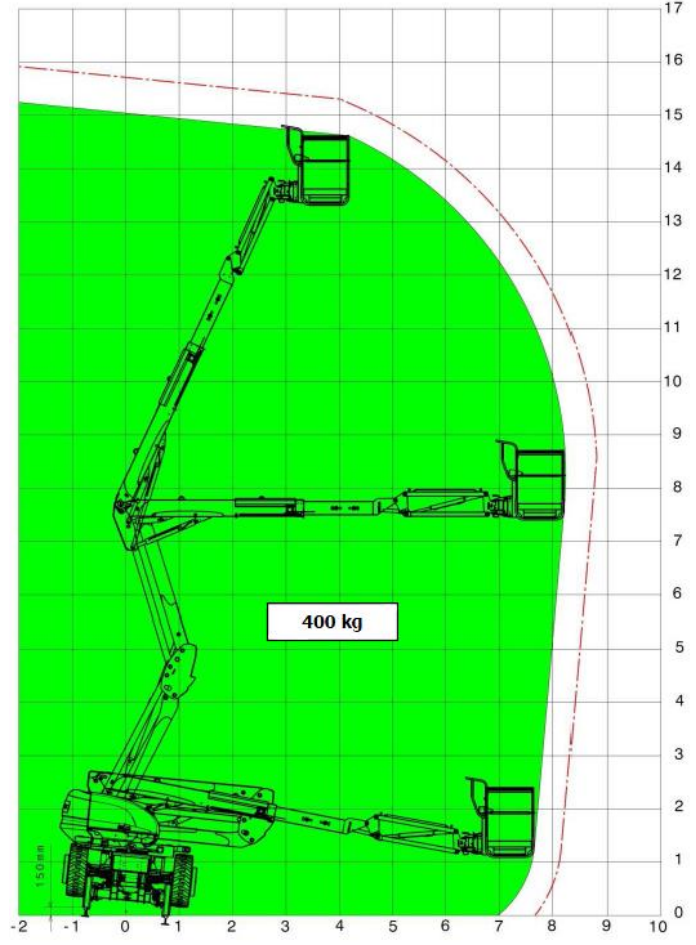
SkyRailer is fully compliant with AS1418 and AS7502 and carries nationwide Design Registration that includes on-rail use. Features such as dual beacons, derail skids and ANZR-1 rail wheels are among over 20 modifications made to the UK and European versions.

Working Envelope

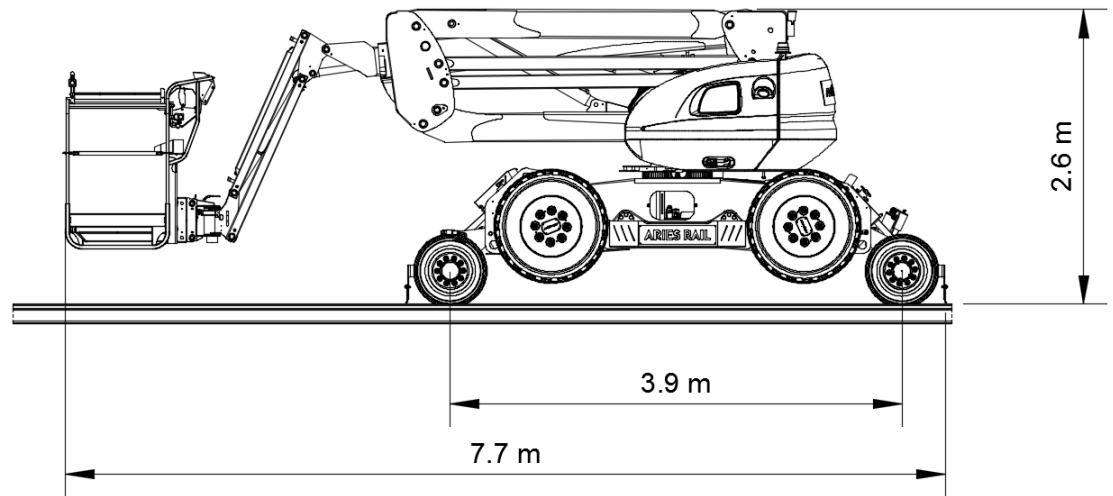
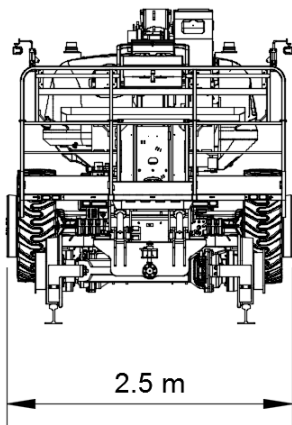
0 – 100mm Cant



150mm cant



Overall Dimensions



Options

Class leading features and capacities make SkyRailer the leading machine in its class. However, capabilities can be further increased through a number of optional accessories and additional equipment.

Trailer

The SkyRailer Trailer has a gross mass of 1000kg making it the perfect accessory to carry tools and other equipment to site on-rail.

A quick and simple electrical connection allows the trailer directional lighting to operate in conjunction with the lights on the towing machine.

A break away alarm alerts the driver in the event of an unexpected disconnection.

Measurement Mast

The measurement mast provides the operator with a reliable and accurate method of measuring contact wire position.

Because the SkyRailer measurement mast is mounted to the chassis, measurements are always accurate in relation to the rail and are not influenced by turret or boom movement.

Multi-Gauge

As standard, all SkyRailer 400RR machines are able to be converted from standard to broad gauge.

A narrow gauge (1067mm) version is also available although the capacity and working envelope may be reduced as a result of the narrower footprint.



Training and Support

With a fleet of service vehicles, experienced technicians and qualified staff, Aries Rail supports SkyRailer throughout Australia.

Every machine is delivered with a complete set of operation and maintenance manuals, risk assessments, test results and all other documentation necessary to allow registration on any Australian rail network.